


N
4485
.P18
1901
CHMEXRF

THE
Pan American
at a
GLANCE





COURT OF THE FOUNTAINS AND ELECTRIC TOWER



TRIUMPHAL BRIDGE FROM THE MINES BUILDING



PANORAMA FROM THE ELECTRIC TOWER



GONDOLA LANDING—GRAND CANAL



TOWER BASIN, PLAZA, AND PROPYLAE



THE GOVERNMENT BUILDING AND ESPLANADE FOUNTAIN



THE GOVERNMENT BUILDING—DEPARTMENT OF AGRICULTURE



THE ELECTRIC TOWER



THE ELECTRICITY BUILDING



MACHINERY-TRANSPORTATION BUILDING



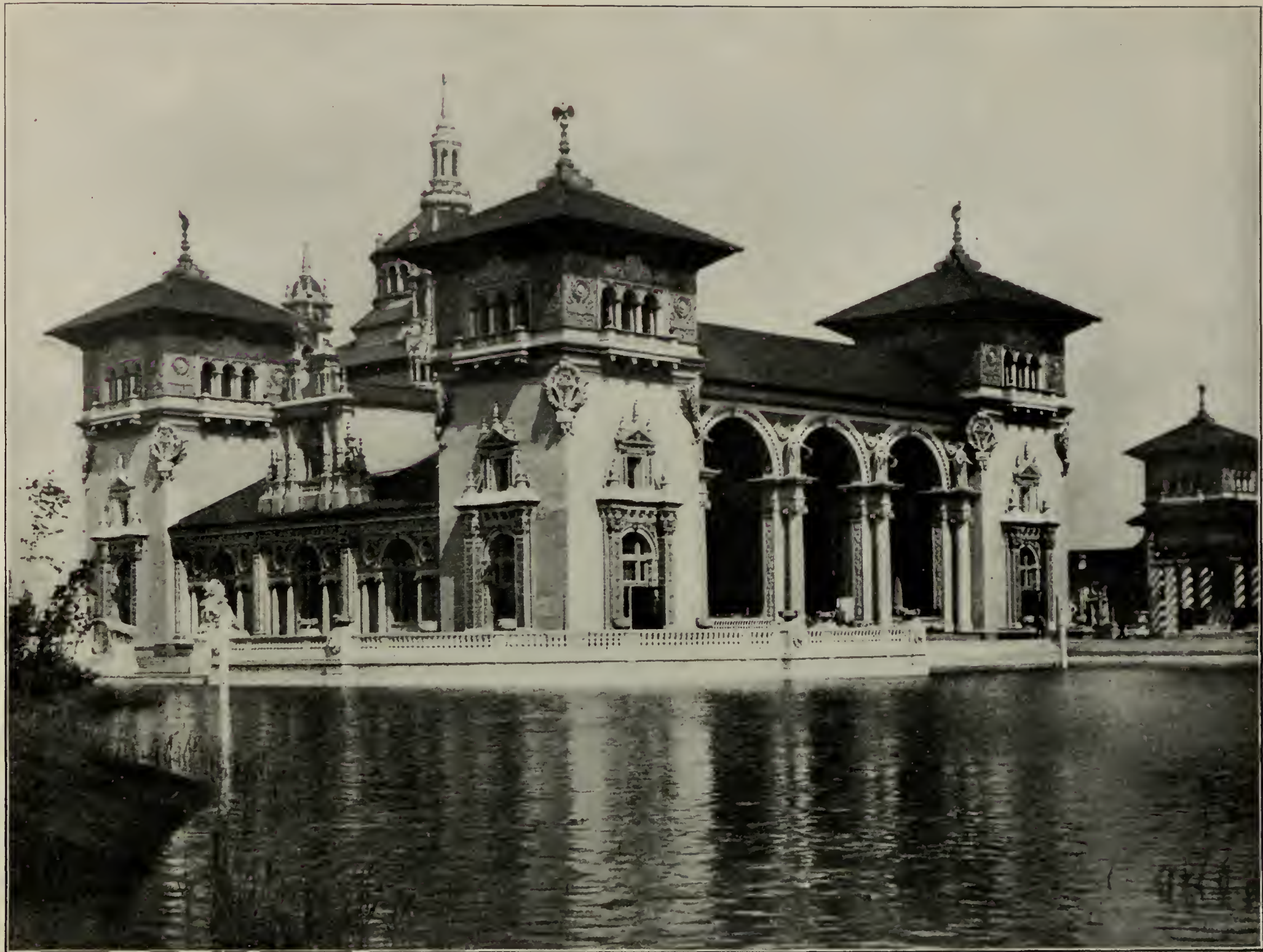
Horticultural Building

Temple of Music

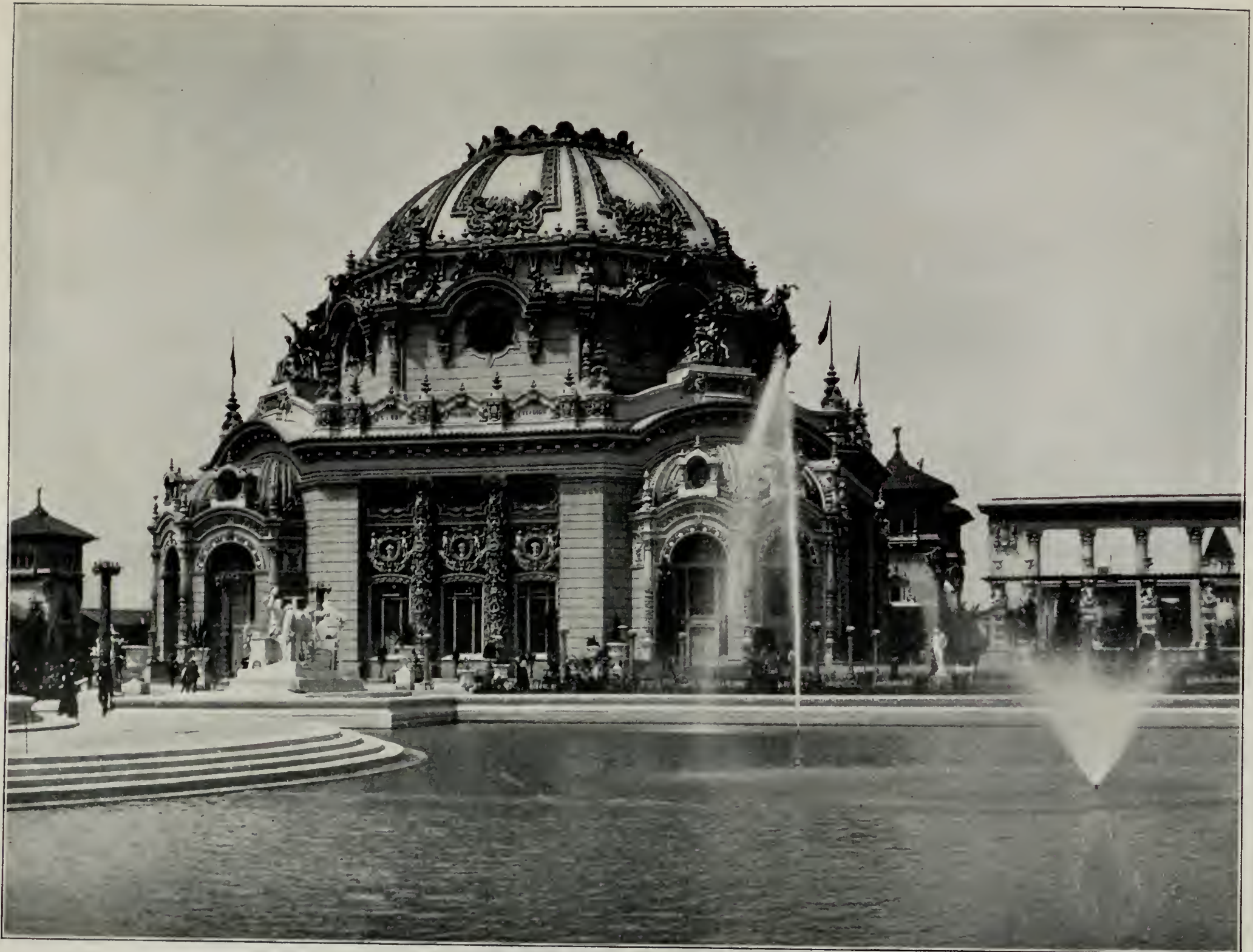
PANORAMA FROM THE ETHNOLOGY BUILDING



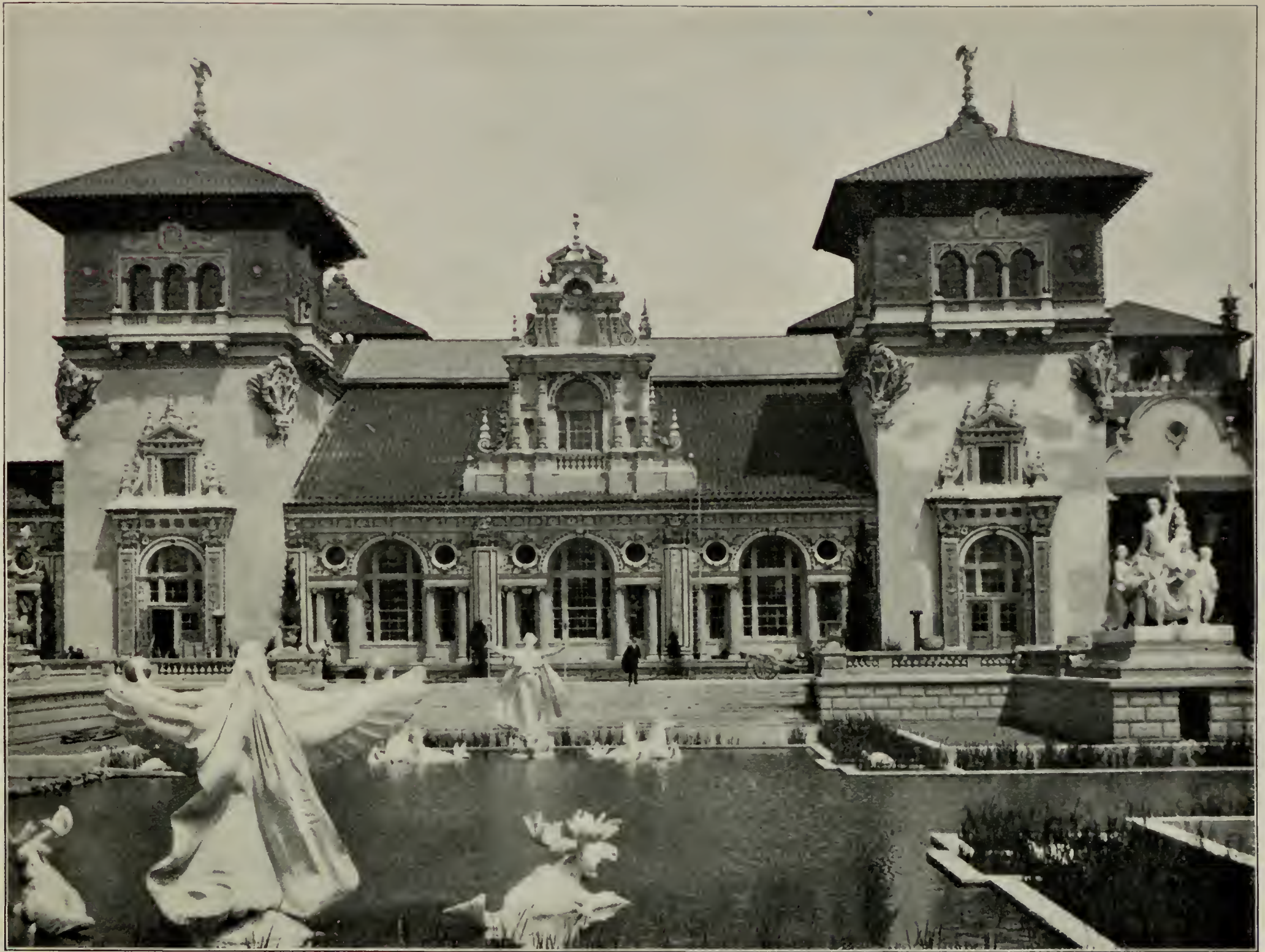
THE HORTICULTURAL BUILDING



THE MINES BUILDING



THE TEMPLE OF MUSIC



THE GRAPHIC ARTS BUILDING



THE ETHNOLOGY BUILDING



ENTRANCE TO THE STADIUM



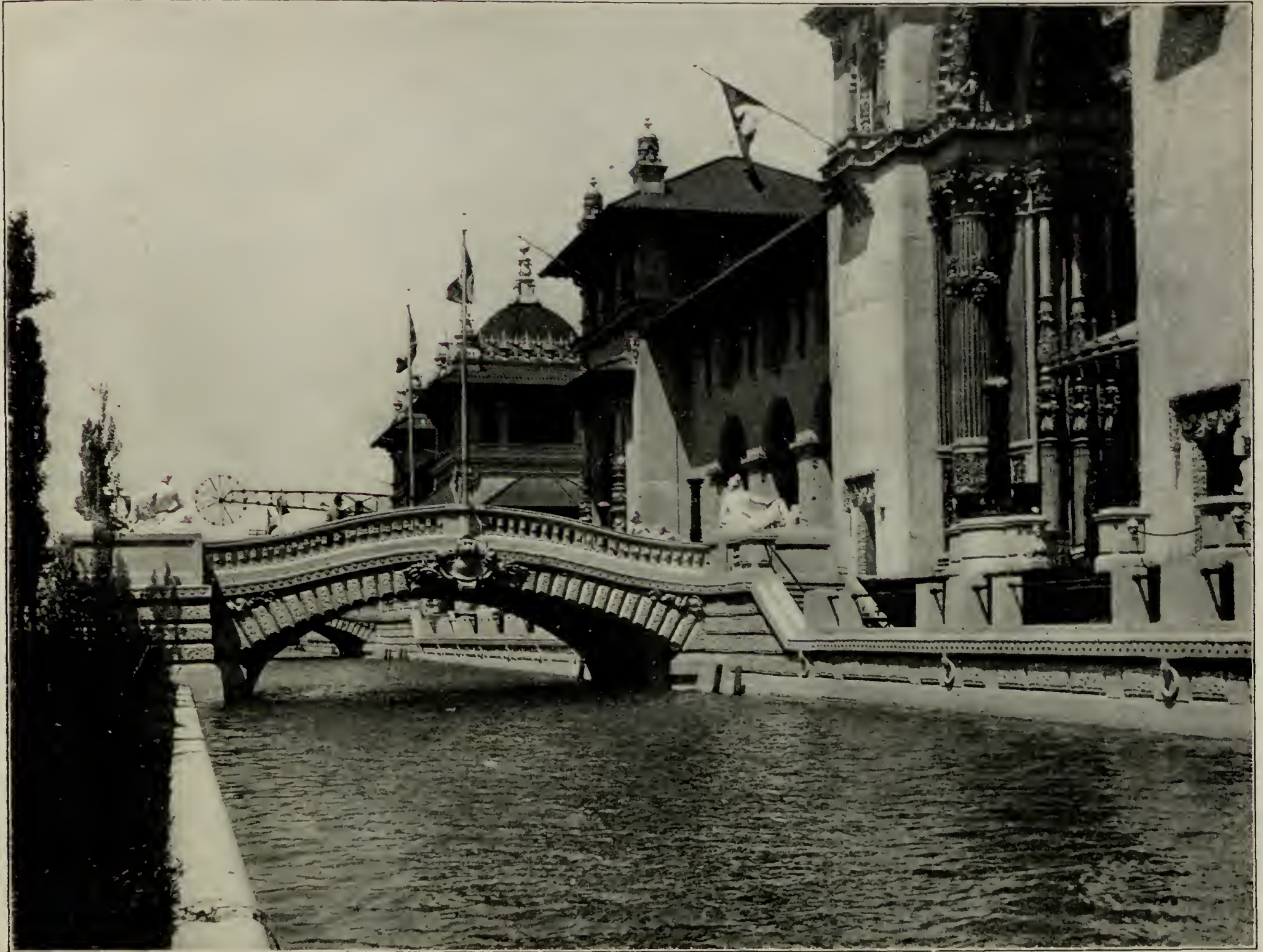
INTERIOR OF THE STADIUM



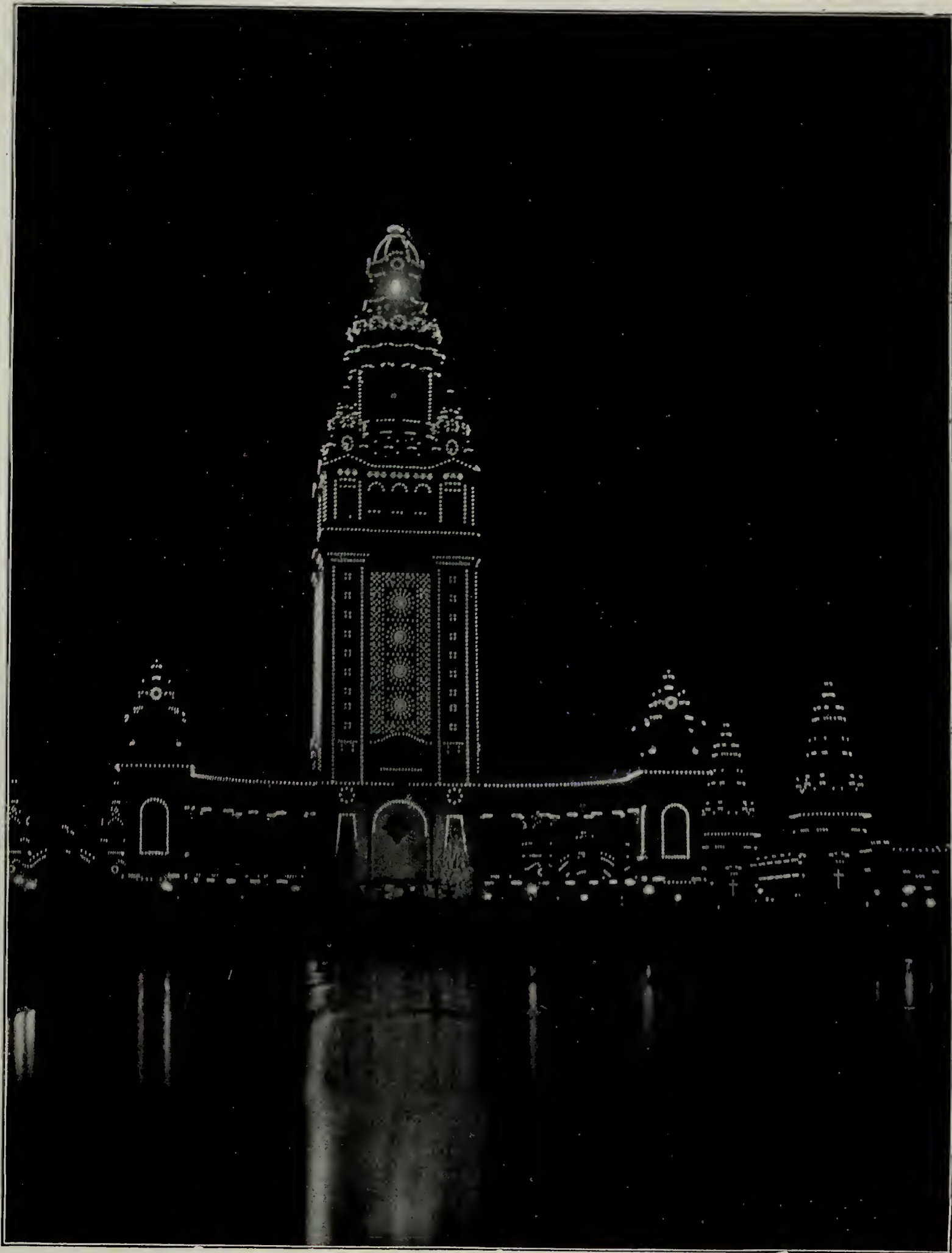
FOUNTAIN OF ABUNDANCE



THE EAST MALL



ON THE GRAND CANAL



ILLUMINATION OF THE ELECTRIC TOWER



ILLUMINATION OF THE TRIUMPHAL BRIDGE



ILLUMINATION OF THE TEMPLE OF MUSIC



THE MIDWAY FROM VENICE IN AMERICA



VENICE IN AMERICA



DREAMLAND



STREETS OF CAIRO-WESTERN ENTRANCE



A DAILY SCENE BEFORE THE STREETS OF CAIRO



ORIENTAL TYPES



THE STREETS OF MEXICO



IN THE BULL RING



THE HOUSE UPSIDE DOWN

SMITHSONIAN INSTITUTION LIBRARIES



3 9088 01546 5925